

# U.S. Environmental Protection Agency Kerr-McGee Chemical Corp – Navassa Superfund Site Operable Unit 2 – Proposed Plan Cleanup Summary



Navassa, North Carolina

May 2022

## Introduction

The U.S. Environmental Protection Agency is issuing a Proposed Plan for the cleanup of Operable Unit 2 (OU2) of the Kerr-McGee Chemical Corp-Navassa Superfund site (the Site) in Navassa, North Carolina (**Figure 1**). The Proposed Plan is available on the Site profile page: [www.epa.gov/superfund/kerr-mcgee-chemical-corp](http://www.epa.gov/superfund/kerr-mcgee-chemical-corp).

This fact sheet summarizes the Proposed Plan for cleanup of OU2 and provides instructions for submitting public comments. EPA's public meeting will be in-person with the option of joining online. The public meeting will explain the proposed OU2 cleanup, the public comment process and EPA will answer related questions.

## Summary of the Proposed Cleanup for OU2

EPA proposes to select **Alternative 2: Removal and Off-site Disposal** for the OU2 cleanup. Alternative 2 consists of the following remedial activities:

- Excavate and remove contaminated surface soils that exceed preliminary remediation goals. **Figure 2** shows OU2 areas requiring excavation.
- Characterize the excavated soil to determine if is considered Resource Conservation and Recovery Act (RCRA) characteristic waste.
- Dispose the soil off-site at an EPA-approved RCRA Subtitle C or D permitted landfill (depending on waste characterization).
- Place clean backfill soil suitable for residential use in the excavated areas.
- Grade and revegetate the backfilled areas to prevent erosion.

EPA proposes this alternative because it will achieve the site's remedial action objectives in the shortest timeframe, it will allow unlimited uses of OU2 after cleanup, and it will not require land use restrictions on OU2. Alternative 2 does not require long-term monitoring, maintenance, or five-year reviews under CERCLA.



**Join the Public Meeting  
(in-person or virtual) for the  
OU2 Proposed Cleanup Plan  
Tuesday, June 14, 2022  
6:00 p.m. – 7:30 p.m.**

**Navassa Community Center,  
338 Main Street**

Use [this Zoom link](#) or  
[tinyurl.com/NavassaMeetings](https://tinyurl.com/NavassaMeetings)



**We want your comments!**  
EPA depends on public input to make sure community concerns are considered during the selection of an effective cleanup. The public is encouraged to comment on the site's Proposed Plan from:

**June 1, 2022  
until  
June 30, 2022  
to  
[spalvins.erik@epa.gov](mailto:spalvins.erik@epa.gov)**

---

## Background

The former facility is located on a 154-acre property. Quality Drive and the former Rampage Boat Company border the property to the north. Marsh along the Brunswick River borders it to the east. Marsh along Sturgeon Creek borders the property to the south. Navassa Road borders it to the west. The 100-acre Superfund site consists of the 70-acre former wood-treating facility and about 30 acres of the marsh south of the former facility. The remainder of the former facility property is about 82 acres. This area, which is not part of the Site, is called the Eastern Upland Area. The focus of this Proposed Plan is the OU2 area along Navassa Road, between OU1 to the north and OU4 to the south (**Figure 1**).

Historically, the 154-acre property provided housing, jobs, and recreation for the community. A rice plantation was located there before the Civil War. After the Civil War, a rural industrial economy developed in the area. Barges unloaded freight on a bluff next to the property, and the area became the location for a rail line connecting Wilmington to the rest of the United States. The Navassa Guano Company used the bluff as part of its operations importing guano from the Caribbean Island of Navassa. Eventually, four fertilizer companies operated in the vicinity of the Site. A railyard and other wood-treating company facilities developed in the area. Throughout these activities, the Brunswick River has been central to the history of the community. The community's riverfront currently consists of three industrial parcels: this Site; an empty fertilizer plant, which was cleaned up in 2011 by the responsible party under EPA oversight, and, and the Pacon Industries facility, which located on another former fertilizer plant.

## Site Ownership

Gulf States Creosoting Company built the plant on the property in 1936. American Creosoting purchased the facility in 1958 and sold it to Kerr-McGee Chemical Corporation (Kerr-McGee) in 1965. Kerr-McGee discontinued site operations in 1974. Kerr-McGee decommissioned and dismantled the plant in 1980.

Kerr-McGee owned the property as a 244-acre parcel until 1991. In 1991, Kerr-McGee transferred 92 acres of marsh to the state of North Carolina, after which Kerr-McGee's property covered about 152 acres. Historical real estate documents incorrectly reported the total acreage as 300 acres.

In March 2006, Kerr-McGee created Tronox, LLC (Tronox) as a spinoff corporation, and Tronox assumed responsibility for the Site. Anadarko Petroleum acquired Kerr-McGee in August 2006. In January 2009, Tronox filed for Chapter 11 bankruptcy protection in federal court.

In February 2011, the Tronox bankruptcy settlement established the Multistate Environmental Response Trust to own and assume responsibility for hundreds of Tronox-owned sites, including the Site. Greenfield Environmental Multistate Trust LLC (Multistate Trust) is the Trustee of the Multistate Environmental Response Trust. The Multistate Trust operates pursuant to the Tronox Bankruptcy Consent Decree and Environmental Settlement Agreement, and pursuant to the February 2011 Environmental Response Trust Agreement.

In 2016, the Multistate Trust purchased two 1-acre residential parcels in the interior of the Eastern Upland Area, increasing the property's size to 154 acres.

---

## Public Comment

This Proposed Plan is part of EPA's public participation responsibilities under the Comprehensive Environmental Response, Compensation, and Liability Act (CERCLA or Superfund) and the National Oil and Hazardous Substances Pollution Contingency Plan (NCP). EPA is the lead agency for action at the Site. The North Carolina Department of Environmental Quality (NCDEQ) is the support agency. EPA relies on public input to make sure community concerns are considered during the selection of effective remedies for each Superfund site.

**The public comment period runs from June 1, 2022, through June 30, 2022.** To access information about the site history, cleanup plans and parties involved, please explore the Site's information repositories and EPA webpage for the Site listed at the bottom of this page.

**EPA will host an in-person and virtual public meeting on June 14, 2022, from 6:00 p.m. to 7:30 p.m.** If you are interested in participating in the meeting, please register at [www.epa.gov/superfund/kerr-mcgee-chemical-corp](http://www.epa.gov/superfund/kerr-mcgee-chemical-corp) for the virtual meeting or email the EPA community involvement coordinator LaTonya Spencer at [spencer.latonya@epa.gov](mailto:spencer.latonya@epa.gov). During the meeting, EPA staff will share details from the Proposed Plan for OU2 and answer any questions the public may have about the Preferred Alternative for the OU2 cleanup. You may also email your comments to Erik Spalvins, EPA's remedial project manager (RPM) for the Site, at [spalvins.erik@epa.gov](mailto:spalvins.erik@epa.gov).

**If you prefer to submit written comments, please mail them, postmarked no later than June 30, 2022,** to: Erik Spalvins, U.S. EPA, Superfund & Emergency Management Division, 61 Forsyth Street, SW, 11th Floor, Atlanta, GA 30303.

After EPA receives comments and questions submitted during the public comment period, EPA will summarize the comments and provide responses to all questions and comments in the site's Responsiveness Summary, which will be part of the site's OU2 Record of Decision (ROD). The OU2 ROD will select the site's final remedial action and provide the basis for the cleanup decision.

## FOR MORE INFORMATION & CONTACTS

### EPA Remedial Project Manager

Erik Spalvins  
(404) 562-8938  
[spalvins.erik@epa.gov](mailto:spalvins.erik@epa.gov)

### EPA Community Involvement Coordinator

L'Tonya Spencer-Harvey  
(404) 562-8463  
[spencer.latonya@epa.gov](mailto:spencer.latonya@epa.gov)

### North Carolina Department of Environmental Quality State Project Manager

David Mattison  
(919) 707-8336  
[david.mattison@ncdenr.gov](mailto:david.mattison@ncdenr.gov)



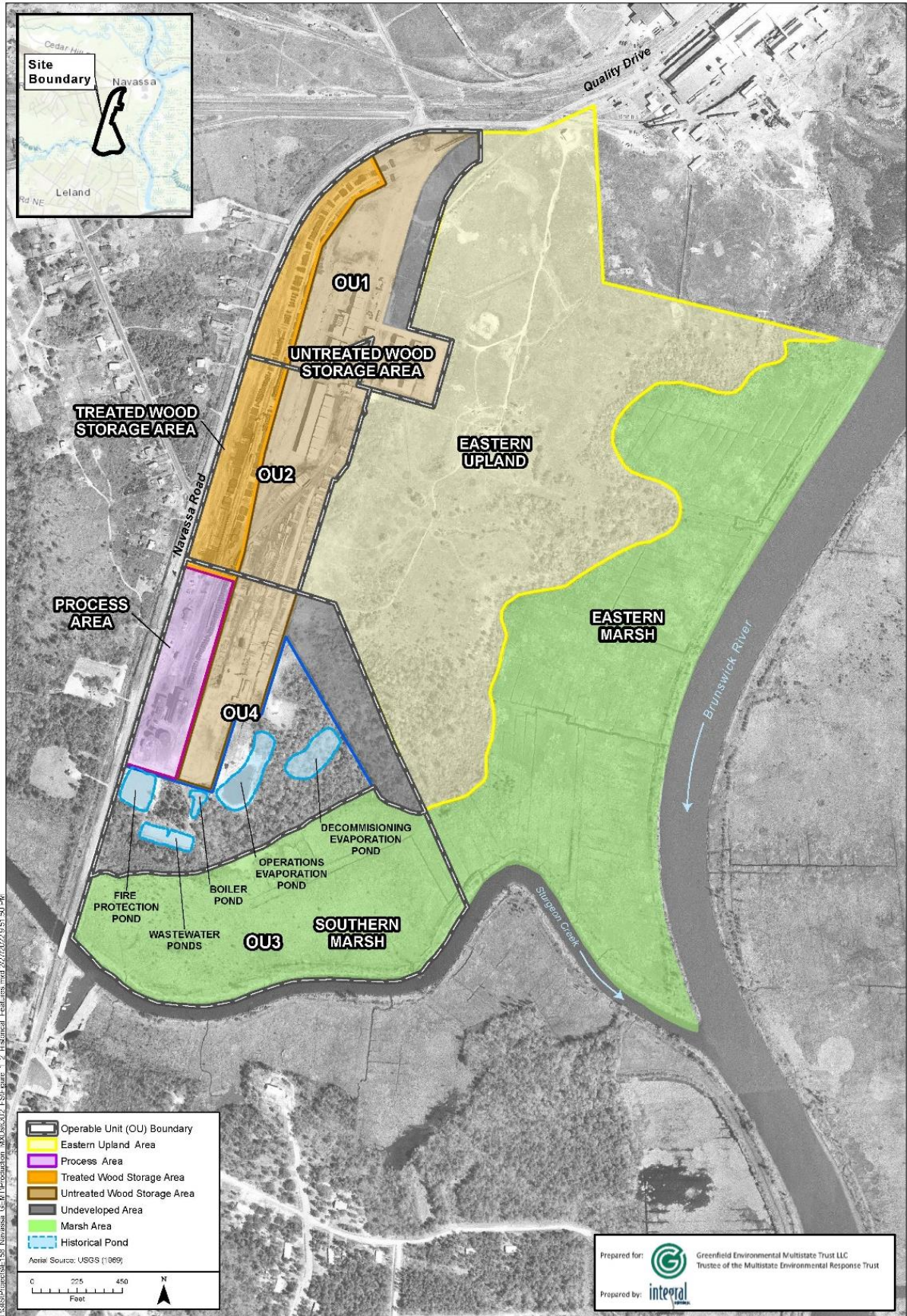
### Information Repositories

Navassa Community Center  
338 Main Street  
Navassa, NC 28451

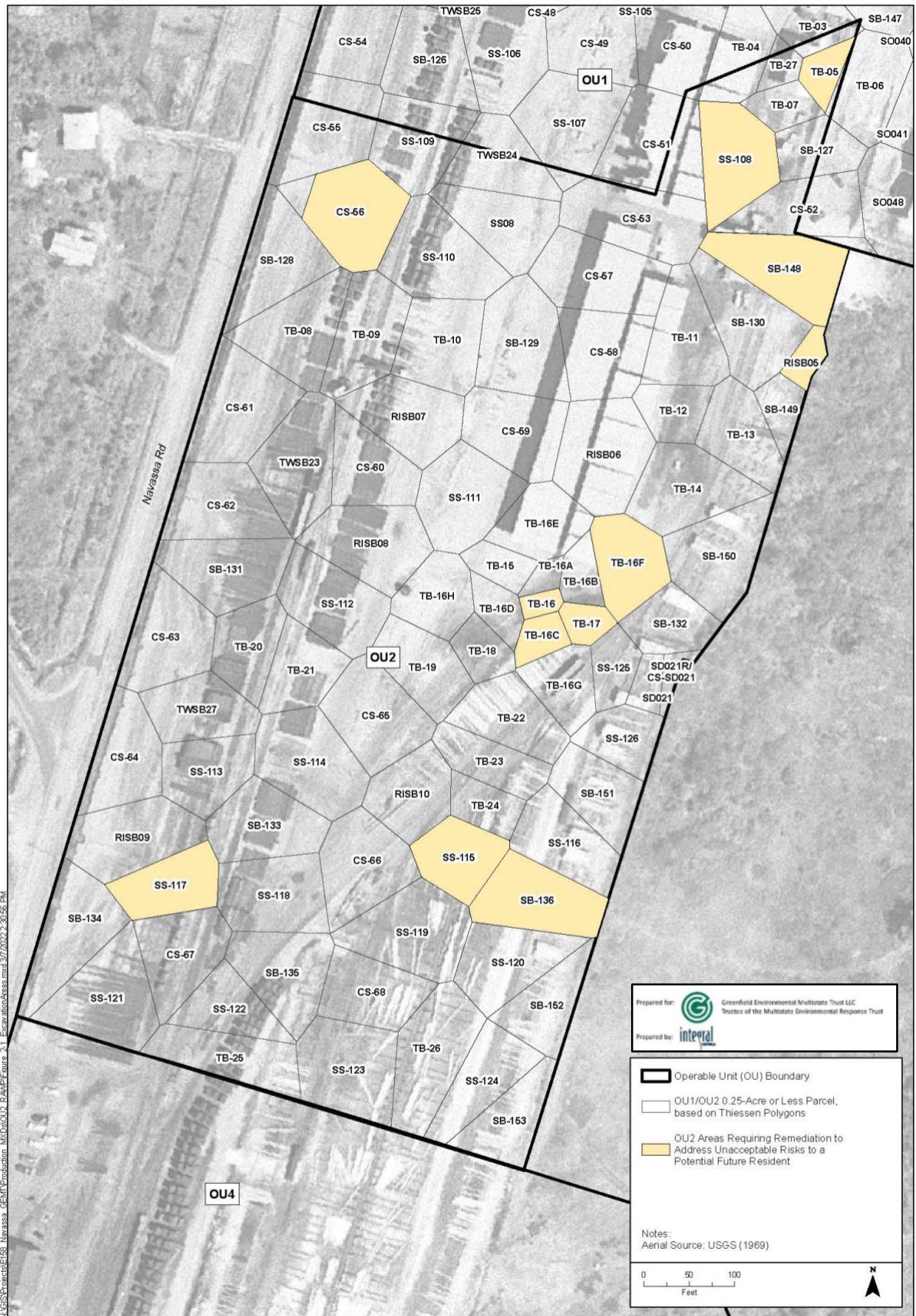
Leland Public Library  
457 Village Road NE  
Leland, NC 28451

<https://www.epa.gov/superfund/kerr-mcgee-chemical-corp>

Figure 1: Detailed Site Map with Historical Features



**Figure 2: OU2 Areas Requiring Remedial Action**



M:\GIS\Projects\EF59\_Navassa\_GEMT\Production\_Maps\OU2\_RAMP\Figure 2-1\_Escort\address.mxd 3/7/2022 2:30:55 PM



-----  
Name \_\_\_\_\_  
Address \_\_\_\_\_  
City \_\_\_\_\_ State \_\_\_\_\_ Zip \_\_\_\_\_

Place  
Stamp  
Here

Erik Spalvins, Remedial Project Manager  
U.S. EPA, Region 4  
Superfund & Emergency Management Division  
61 Forsyth St., SW  
Atlanta, GA 30303



United States Environmental Protection Agency  
Region 4  
Attn: L'Tonya Spencer, Community Involvement Coordinator  
ORA/OCACE/SCE  
61 Forsyth Street, SW  
Atlanta, GA 30303-8960