

Kerr-McGee Chemical Corp. Navassa Superfund Site

Community Meeting Thursday December 7, 2023

**U.S. Environmental Protection Agency
N.C. Department of Environmental Quality
Greenfield Environmental Multistate Trust LLC,
Trustee of the Multistate Environmental Response Trust**



Meeting Agenda

- ✓ Welcome and Introductions
- ✓ OU2 Remedial Action
 - OU2 Fact sheet and public briefing
 - OU2 Work Update
 - OU2 Contractor Outreach Event
- ✓ OU3/OU4/OU5 Supplemental Remedial Investigation
- ✓ Navassa Road Drainage Ditch Sampling
- ✓ Property Sale Update



Welcome and Introductions

L'Tonya Spencer-Harvey, EPA
Zariah Lewis, EPA



Introductions

- ✓ Kerr-McGee Superfund Site Cleanup Team
 - U.S. Environmental Protection Agency (EPA)
 - N.C. Department of Environmental Quality (NCDEQ)
 - Multistate Environmental Response Trust (Multistate Trust)

- ✓ Natural Resource Trustees

- ✓ Navassa Town Officials

- ✓ Other Partners
 - N.C. Department of Health and Human Services/N.C. Division of Public Health (NCDHHS) – Health education and outreach
 - University of North Carolina – Wilmington (UNCW) and Brunswick Community College (BCC) – College / Underserved Community Partnership Program (CUPP)

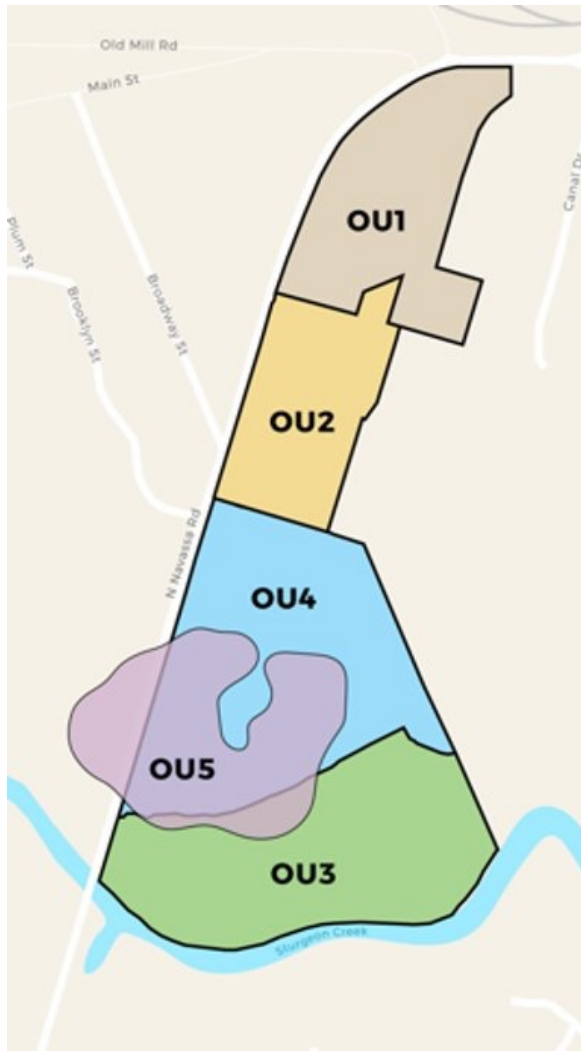


EPA Overview and Remedial Action Kickoff Update

Erik Spalvins, EPA






Site Overview



- ✓ Operable Unit 1 (OU1)
 - ±20 acres
 - Untreated wood storage area
- ✓ Operable Unit 2 (OU2)
 - ±16 acres
 - Treated and untreated wood storage area
- ✓ Operable Unit 3 (OU3)
 - ±30 acres
 - Southern Marsh
- ✓ Operable Unit 4 (OU4)
 - ±32-36 acres
 - Pond and process area
- ✓ Operable Unit 5 (OU5)
 - Groundwater

OU2 RA Fact Sheet and Kickoff

- ✓ Before starting remedial actions, EPA issues a fact sheet to inform the community – this is a joint fact sheet
- ✓ This meeting serves as EPA's “RA kickoff” public briefing per 40 CFR 300.435 (c)(3)
- ✓ Multistate Trust will excavate and remove ±2,900 cubic yards from excavation areas in OU2
- ✓ OU2 will be available for unrestricted use, with no long-term monitoring or maintenance



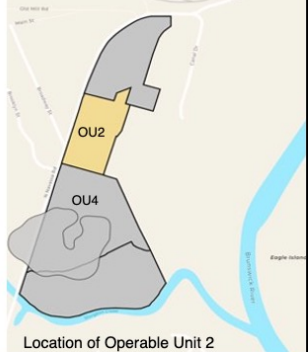
Kerr-McGee Chemical Corp – Navassa Superfund Site Operable Unit 2 Fact Sheet Updated December 2023

The Multistate Environmental Response Trust (Multistate Trust) is working to remove surface soil contamination from Operable Unit 2 (OU2) of the Kerr-McGee Chemical Corp – Navassa Superfund Site (the Site).

Background

From 1936 to 1974, Kerr-McGee and its predecessors used creosote to treat wood for railroad ties, utility poles, and pilings. Treated and untreated wood was stored on the Site, including on the ±16-acre area that is now OU2.

From 2006 to 2022, ±465 samples were collected in OU2 to understand potential risks to people and the environment. The Multistate Trust completed the Feasibility Study in April 2022. The U.S. Environmental Protection Agency (EPA) issued a Proposed Plan in May 2022 and signed the Record of Decision selecting the remedy in September 2022.



Location of Operable Unit 2

Upcoming OU2 Work

The Multistate Trust will excavate surface soils in OU2 with contamination higher than residential or ecological cleanup levels. Excavated soils will be placed on Operable Unit 4 (OU4) in two temporary stockpiles that will *not* be visible from Navassa Road. The excavated soils will be covered, managed, and regularly inspected. Soils are expected to be reused or consolidated into the future cleanup of OU4. Material that cannot be stored on-site will be recycled or disposed off-site in accordance with state and federal environmental laws.

Local Contracting

The Multistate Trust seeks to invest cleanup funds in the local economy by offering training and employment opportunities for local individuals and businesses. In line with this goal, following a robust search and bid process, two local firms were selected and approved to complete the OU2 work. Both firms are committed to supporting the local economy through hiring and training opportunities, and by offering potential long-term employment beyond the OU2 work.

Page 1



OU2 Selected Remedy Components

(OU2 ROD: <https://semspub.epa.gov/work/04/11138479.pdf>)

- ✓ Excavate and remove contaminated surface soils that exceed residential or ecological cleanup levels.
- ✓ Stockpile (i.e., temporary storage) excavated OU2 soils in staging piles located in OU4
- ✓ On-site reuse/consolidation of OU2 soils in OU4, as determined in the OU4 selected remedy.
- ✓ Place and grade imported clean backfill material suitable for residential use in OU2 excavated areas.
- ✓ Five-year reviews are **not required** for OU2.
- ✓ Regular inspections and five-year reviews **are required** for the stockpiles in OU4 until EPA selects a final remedy for OU4.



OU2 Remedial Action Work Update

Ngozi Ibe, Multistate Trust



OU2 RA Work Timeline

- ✓ **Pre-construction activities (Ongoing – January 2024):**
contractor plan submittals, outreach hiring event, contractor training
- ✓ **Mobilization (January 2024):**
mobilize equipment on-site, establish temporary facilities, erosion and sediment control measures, construct haul roads, install site security, etc.
- ✓ **Excavation and backfill (February – April 2024):**
Excavate ±2,900 cubic yards of soils from pre-determined excavation areas. Excavated areas will be backfilled with clean, imported backfill material.

*Dates on slides are subject to change, based on work progress

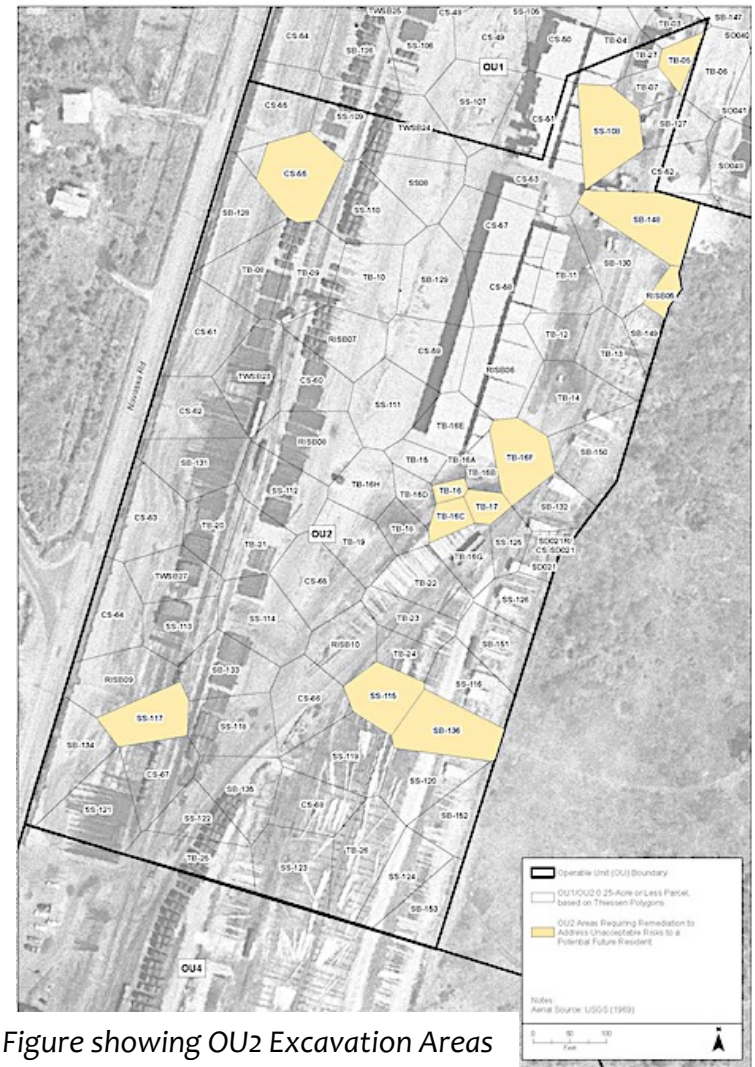


Figure showing OU2 Excavation Areas

OU2 Work Process and Timeline

- ✓ **Soil Stockpiling (February – April 2024):**
OU2 soils loaded onto trucks and hauled to two separate soil stockpiles in OU4. Stockpiled soils will be reused/consolidated as part of OU4 remedy.
- ✓ **Off-site Disposal (April – May 2024):**
Excavated Materials not suitable for soil stockpiles will be disposed or recycled off-site (e.g., tires, personal protective equipment, concrete, trash, railroad ties, etc.)



**Dates on slides are subject to change, based on work progress*

OU2 Work Process and Timeline

- ✓ **Site Restoration (April – May 2024):**
Hydroseed will be placed over backfilled excavation areas to restore vegetation and prevent erosion where needed
- ✓ **Site Inspection/ Demobilization (May 2024):**
Visual inspection to verify that site restoration is complete. Removal of equipment and other infrastructure. Soil stockpiles will be regularly inspected and maintained.



Example of hydroseeding to restore vegetation

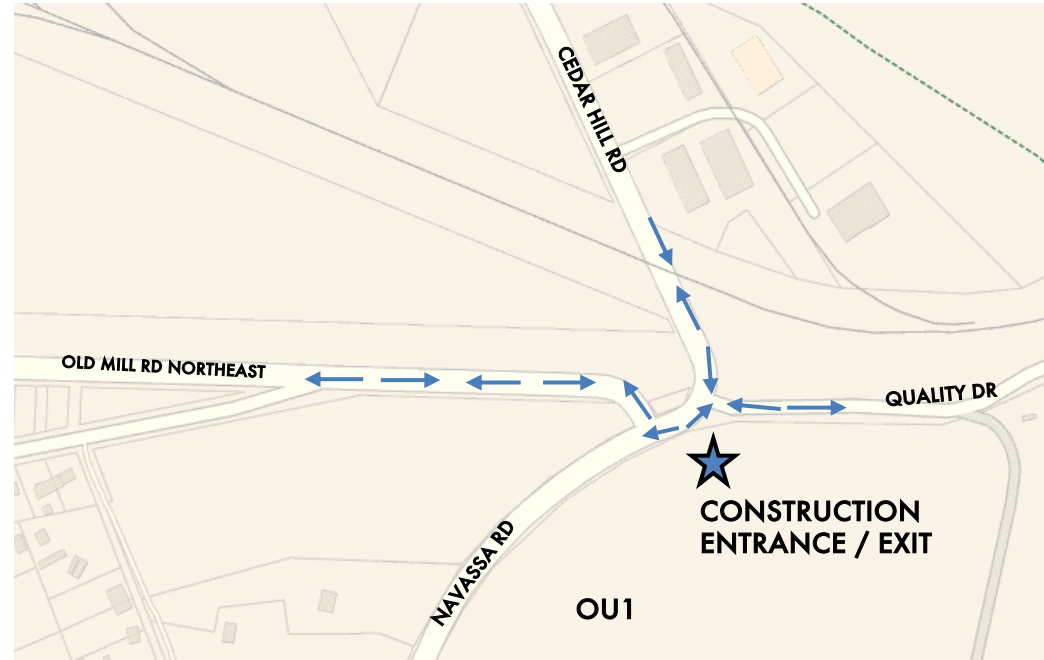
**Dates on slides are subject to change, based on work progress*



OU2 RA work – What will you see?

✓ Vehicular traffic

- Construction vehicles (e.g., dump trucks, excavators, backhoes) will be mobilized and staged on-site
- Trucks will bring materials and temporary facilities (e.g., port-a-johns, field trailer)
- Flaggers and local law enforcement may assist with traffic management
- Transportation and Disposal Plan Fact Sheet will be distributed



- ✓ **Site Security** – construction fencing, traffic barriers, signs, other security measures placed around perimeter and within Site to secure equipment and limit site access

OU2 RA work – What will you see?

- ✓ Silt fences, straw wattles, temporary berms to prevent stormwater runoff into ditches



Example Air Monitor - Thermo 1500 TSI DustTrak

- ✓ Air monitoring stations placed at perimeter of work area to monitor dust and air quality

OU2 RA work – What will you NOT see?

- ✓ Excavation and backfilling activities will not be visible from Navassa Road
- ✓ First soil stockpile in OU4 will be placed in existing depression in ground and not visible from Navassa Road
- ✓ Second soil stockpile in OU4 will be at surface but not visible from Navassa Road



Example: Sonford Superfund Site OU1 Flowood, Mississippi

OU2 Contractor Outreach Event

Ngozi Ibe, Multistate Trust



OU2 RA Contractor Outreach Event

- ✓ Prime Contractors hosted Outreach Event on October 24th in Navassa
- ✓ Over 40 individuals and businesses in attendance
- ✓ Purpose of event:
 - Share information on OU2 work and contractor hiring needs
 - Allow individuals and businesses to express interest and understand training needs
 - Answer questions regarding eligibility and training opportunities
- ✓ Contractors following up with applications from multiple individuals and businesses
- ✓ Planning 40-hour HAZWOPER training in progress, additional information coming
- ✓ Contractors still accepting applications, training requests



OU₃/OU₄/OU₅ Supplemental Remedial Investigation

Ngozi Ibe, Multistate Trust



OU3/OU4/OU5 SRI Activities

- ✓ SRI activities conducted September through October 2023
- ✓ Advanced 22 soil borings in the uplands (OU4) and 41 borings in the marsh (OU3) to delineate DNAPL and collected samples to support remedial evaluations
- ✓ Installed sampling devices in the marsh to evaluate natural degradation of groundwater contaminants



Geoprobe for Soil Boring, Sept 2023



OU3 Marsh Sampling, Sept 2023

OU3/OU4/OU5 SRI Activities

- ✓ Installed trenches in the pond and process area (OU4) to identify existing piping that may be a source of contamination transport



OU₃/OU₄/OU₅ SRI Activities

- ✓ SRI activities currently ongoing (December 2023):
 - Slug testing in 11 monitoring wells to evaluate groundwater flow velocity
 - Retrieving sampling devices to evaluate natural degradation of groundwater contaminants
 - Additional tracing for piping identified during previous sampling activities



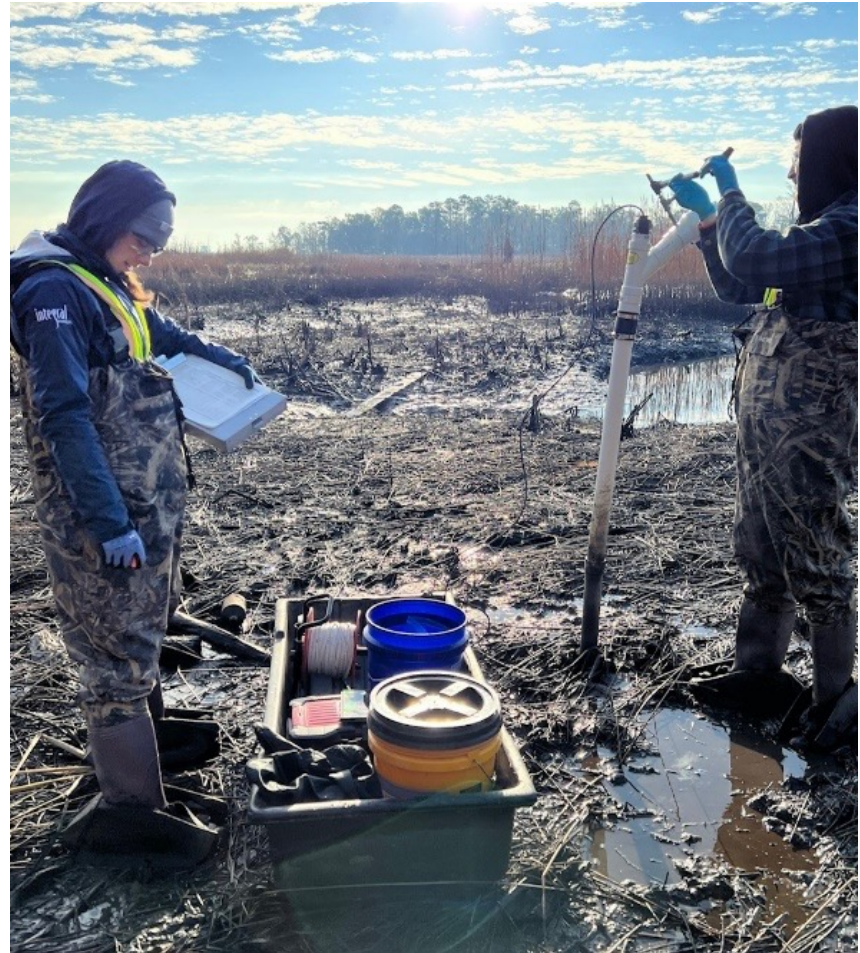
Monitoring Well Measurements, March 2023

OU3/OU4/OU5 – Next Steps

✓ Winter 2023/2024:

- Conduct Semi-annual groundwater monitoring (OU5)
- Analyze and validate lab results for soil and sediment SRI samples collected in September/October and December
- Perform evaluations as outlined in the SRI work plan

✓ Spring 2024: Prepare report of SRI activities and evaluations



Groundwater Flow Evaluation, December 2023

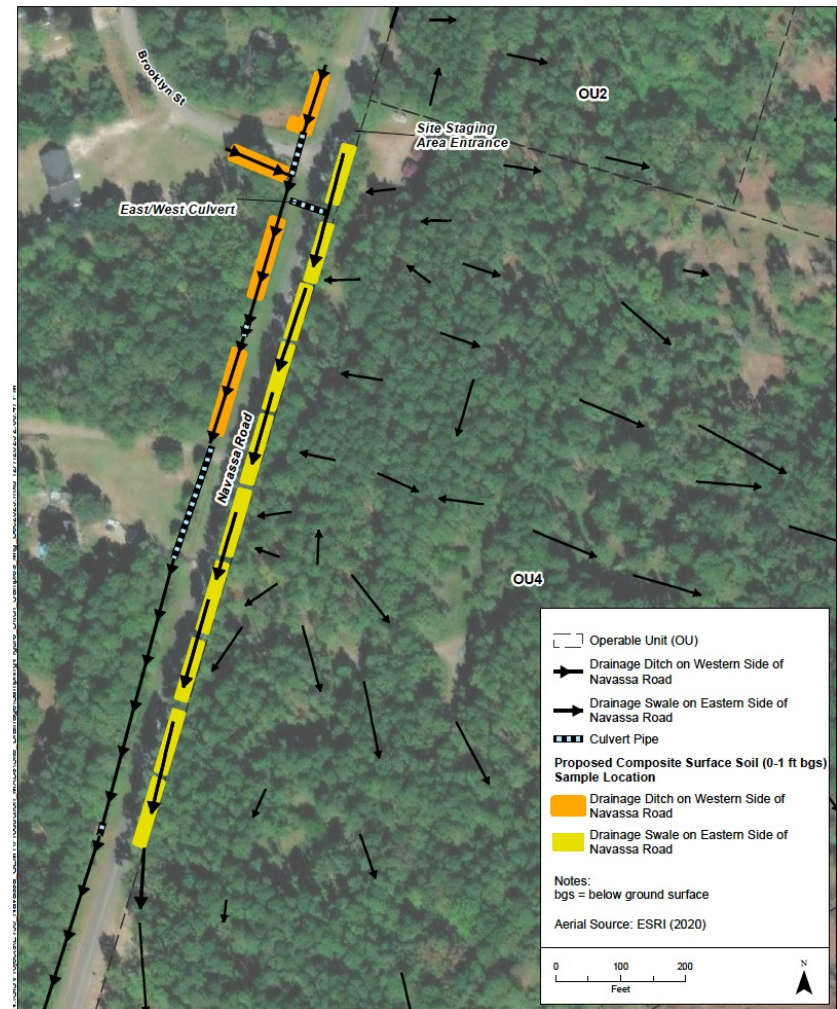
Navassa Road Drainage Ditch Sampling

Ngozi Ibe, Multistate Trust



Drainage Ditch Sampling

- ✓ Concern about risk of contamination from Site runoff into Navassa Road drainage ditches
- ✓ Analyses indicated site runoff poses no unacceptable risk to residents
- ✓ Proposed surface soil sampling (0-1') in ditch to verify conclusions
- ✓ Sampling approach revised to include subsurface soil samples (1-3') in response to Town feedback
- ✓ Surface **and** subsurface soil sampling will be conducted December 4-7



Proposed Drainage Ditch Sample Locations

Drainage Ditch Sampling



Navassa Road Drainage Ditch Sampling

Property Sale

Claire Woods, Multistate Trust



Property Sale Process

FOR SALE

Multistate Trust Property
Navassa, NC

July 2022

MULTI-ACCESS SITE NEAR PORT OF WILMINGTON



- **Acres:** ±154 (±102 acres anticipated to be available)
- **Highways:** I-140 and US 74 / 76 / 17 interchanges within 2 miles
- **Rail:** CSX adjacent
- **River:** Brunswick River potential access
- **Port of Wilmington:** within 7.5 miles
- **Airport:** Wilmington International Airport within 10 miles
- **Utilities:** water, sewer, natural gas, electricity, fiber
- **Zoning:** mixed-use potential
 - commercial – almost 100% leakage in 2-mile radius
 - light industrial – closest large site to Port
 - residential – high density, as part of mixed use
 - recreational – unique local history, water assets
- **Certified Opportunity Zone**
- **Environmental:** ±102 acres anticipated to be available for unrestricted use

Owner Contact:

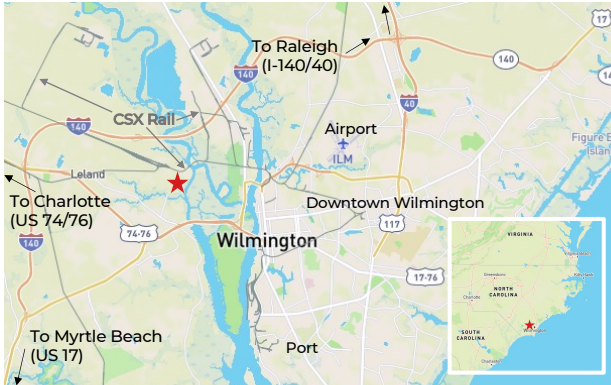
Claire Woods
Senior Attorney
cw@g-etg.com
(910) 765-7237

Marketing Contact:

Robin Spinks
Consultant
robin@greenfield.bz
(910) 617-7544

Owner:

Greenfield
Environmental
Multistate Trust LLC,
Trustee of the
Multistate
Environmental
Response Trust



Greenfield Environmental Multistate Trust LLC,
Trustee of the Multistate Environmental Response Trust

Visit navassa.greenfieldenvironmental.com

- ✓ Issued Invitation to Bid on ±87 acres:
 - ±51 acres – Eastern Upland Area
 - ±20 acres – OU1
 - ±16 acres – OU2
- ✓ Deadline for responses extended to November 30
- ✓ One bid received; bid did not meet minimum requirements designed to ensure future land use is compatible with Town and community goals
- ✓ Multistate Trust is revisiting property sale strategy and will provide updates as soon as possible
- ✓ Multistate Trust remains committed to the Moze Center land donation



Resources

- ✓ **EPA Site Profile Page:**
<https://www.epa.gov/superfund/kerr-mcgee-chemical-corp>
- ✓ **EPA Information Repository Administrative Record*:**
<https://semspub.epa.gov/src/collections/04/AR/NCD980557805>
- ✓ **Multistate Trust Website:** <https://navassa.greenfieldenvironmental.com/>
- ✓ **NOAA Kerr-McGee NRDA case webpage:**
<https://darrp.noaa.gov/hazardous-waste/kerr-mcgee-chemical-corp-tronox>
- ✓ **Navassa Community Center**
- ✓ **Leland Public Library**

**All EPA Administrative Records used for cleanup decisions are available at the link.*



Contact Information

- ✓ **Erik Spalvins, EPA Remedial Project Manager**
 - (404) 562-8938, spalvins.erik@epa.gov
- ✓ **L'Tonya Spencer-Harvey, EPA Community Involvement Coordinator**
 - (678) 575-8145, spencer.latonya@epa.gov
- ✓ **Zariah Lewis, EPA Community Involvement Coordinator (interim)**
 - (404) 562-8342, lewis.zariah@epa.gov
- ✓ **David Mattison, NCDEQ Superfund Section Project Manager**
 - (919) 707-8336, david.mattison@deq.nc.gov
- ✓ **Ngozi Ibe, Multistate Trust Senior Project Manager**
 - (919) 695-9582, ni@g-etg.com
- ✓ **Claire Woods, Multistate Trust Director of Environmental Justice**
 - (910) 765-7237, cw@g-etg.com
- ✓ **Ian Rossiter, NOAA Community Liaison**
 - (854) 429-3857, ian.rossiter@noaa.gov
- ✓ **Krista McCracken, NOAA Case Team Lead**
 - (843) 478-2196, krista.mccracken@noaa.gov



Questions and Discussion

Next Meeting Proposed: First Quarter 2024

