

4th Quarter 2020 Update Fact Sheet

Kerr-McGee Chemical Corp – Navassa Superfund Site, Navassa, NC

The purpose of this fact sheet is to update the Navassa community and other stakeholders about remediation and other activities at the Kerr-McGee Chemical Corp – Navassa Superfund Site (the Site). This fact sheet was prepared jointly by the U.S. Environmental Protection Agency (EPA), the North Carolina Department of Environmental Quality (NCDEQ), and the Multistate Environmental Response Trust (the Multistate Trust).

Progress on Site Activities Since 2nd Quarter 2020 Update Fact Sheet

- **OU1** (the portion of the Treated and Untreated Wood Storage Areas requiring no remedial action to meet residential or unrestricted use criteria): The Multistate Trust has completed a soil sampling program, analyzed the data, and written an *Operable Unit 1 (OU1) Soil Sampling Technical Memo – Residential Criteria Area Delineation*, which supports the OU1 Proposed Plan.

- **OU2** (the portion of the Treated and Untreated Wood Storage Areas requiring remedial action to meet residential or unrestricted use criteria): The Multistate Trust completed: a soil sampling program to support a human health risk assessment for the future land uses described in the Town of Navassa's Position Letter dated Oct. 15, 2020; and an invertebrate sampling program to use in evaluating ecological risk in OU2.

- **OU3** (Southern Marsh): The Multistate Trust completed a Passive Diffusion Sampler, sediment, and surface water sampling program to supplement the ecological risk assessment, and the results will be included in an addendum to the Baseline Ecological Risk Assessment.

- **Property Management:** The Multistate Trust continued to provide oversight of installation of Brunswick County Wastewater Treatment Plant force main and replaced the damaged fence along Navassa Road.

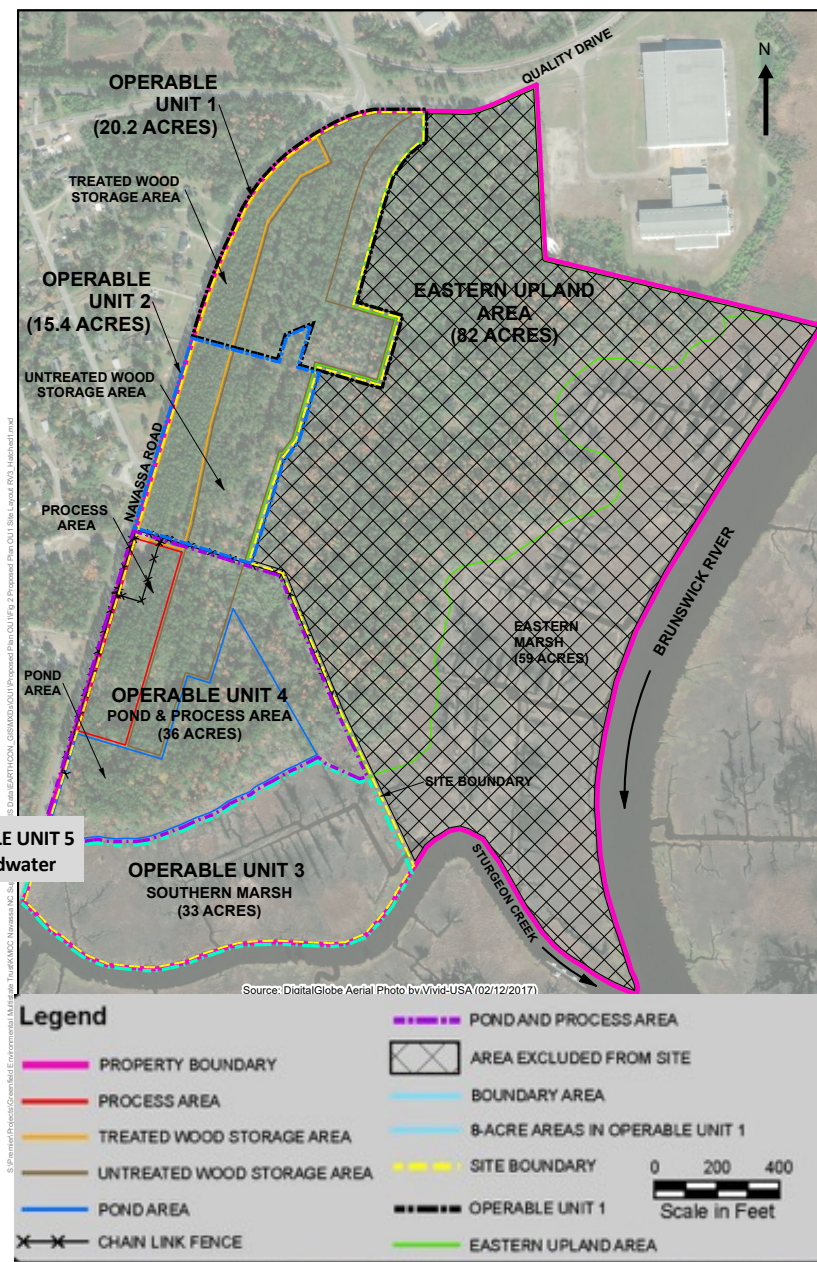


Figure 1 shows the Kerr-McGee Chemical Corp – Navassa Superfund Site and its Operable Units 1 through 5, as well as the adjoining Eastern Upland Area and Eastern and Southern Marshes.

Kerr-McGee Navassa Site, 4th Quarter 2020

Operable Unit 1 Proposed Plan Update

EPA released a Proposed Plan for Operable Unit 1 (OU1) in October 2019. It defined OU1 as 21.6 acres with anticipated commercial, industrial, and recreational land uses. In 2020, after receiving additional input from the Town of Navassa, EPA and NCDEQ decided to evaluate OU1 for unrestricted residential land use. As a result of the change in anticipated land use, additional sampling was conducted in August 2020 to evaluate risks based on unrestricted residential land use. The 2020 OU1 sampling results were summarized in the *OU1 Soil Sampling Technical Memorandum – Residential Criteria Area Delineation*, which was approved by EPA and NCDEQ in October 2020 and posted to EPA's website at <https://semspub.epa.gov/work/04/11145178.pdf>.

EPA plans to issue a new OU1 Proposed Plan in 2021 that will replace the 2019 Proposed Plan and address a smaller, 20.2-acre OU1 area. As described in the *OU1 Soil Sampling Technical Memorandum – Residential Criteria Area Delineation*, there are 20.2 acres that currently meet NCDEQ residential or unrestricted use criteria under North Carolina General Statutes § 143B-279.9(b)(1) and that will require no institutional controls.

The Multistate Trust, EPA, and NCDEQ agreed to delay in-person, quarterly public meetings because of travel restrictions, the State of North Carolina (NC) COVID-19 orders, and other guidance. There has been little or no delay of office-based activities, such as preparing and reviewing technical documents. Multistate Trust contractors continue to update their Site health and safety plans to comply with evolving federal, state, and local COVID-19 guidance. Field activities have been performed in accordance with all applicable COVID-19 guidelines.

The Multistate Trust is a private, independent trust that was created as part of the Tronox bankruptcy settlement in 2011 to own, manage, remediate, and facilitate safe, beneficial reuse of the Site in Navassa. The Trustee of the Multistate Trust is Greenfield Environmental Multistate Trust LLC.

EPA is the lead agency, which approves Multistate Trust remediation plans and budgets. NCDEQ is the support, or non-lead, agency, which consults with EPA on Multistate Trust plans and budgets.

For More Information

Multistate Trust website <https://multi-trust.org/navassa-north-carolina>
EPA website <https://www.epa.gov/superfund/kerr-mcgee-chemical-corp>

2020 Activities Progress, Kerr-McGee Navassa Site, 4th Quarter 2020

The Multistate Trust and its contractors performed the following activities, unless otherwise indicated.

OU1/OU2 Treated and Untreated Wood Storage Areas

- Completed soil sampling field work, analysis and risk assessment evaluation to meet EPA and NCDEQ criteria for residential or unrestricted use with no institutional controls.
- Documented the sampling data and results of the analysis and risk assessment evaluation in the *OU1 Soil Sampling Technical Memo – Residential Criteria Area Delineation*, which was shared with the Navassa Town Council and Navassa Community Economic and Environmental Redevelopment Corporation and is a key document supporting the OU1 Proposed Plan.
- EPA is preparing a new OU1 Proposed Plan for distribution in January 2021.

OU2 (the portion of Treated and Untreated Wood Storage Areas requiring remedial action to meet residential or unrestricted use criteria)

- Completed soil sampling and soil invertebrate field work (to evaluate ecological risk).
- Currently conducting an ecological risk analysis and planning to update the Baseline Ecological Risk Assessment (BERA).
- OU2 soil invertebrate and soil data is being evaluated and will be documented in a Technical Memo. The Technical Memo will provide support for the OU2 Proposed Plan.
- The Town of Navassa provided an Oct. 15, 2020 Position Letter on OU2 potential future land use. The potential future land use will be used in the human health risk assessment.

OU3 Southern Marsh

- Conducted drone-based surface water thermal imaging and multi-spectral vegetation imaging survey of marsh areas. The survey was used to define potential groundwater discharge to the Southern Marsh and to position the Passive Diffusion Samplers (PDS).
- Completed PDS, sediment and surface water sampling field work. Samples are being evaluated in the lab.
- An OU3 Pore Water, Sediment and Groundwater Technical Memo will summarize the findings and ecological risk assessment and will be the basis for the updated BERA.

OU4 Pond and Process Area

- Developing the subsurface soil sampling Work Plan to improve understanding of subsurface geology and aquifer geotechnical parameters to support the Feasibility Study Technical Alternatives Analysis.
- Conducting an ecological risk assessment, which will be documented in an OU4 Ecological Risk Technical Memo.

OU5 Groundwater

- Conducted a groundwater monitoring well sampling event in August, and another is planned for November.
- Completed abandonment of six monitoring wells with a history of being below the contaminant detection limit and abandoned and replaced another monitoring well that appeared to be compromised.

Property Management and Disposition

- Continues to provide oversight of installation of Brunswick County Wastewater Treatment Plant force main.
- Repaired a damaged fence along Navassa Road in November.
- Continues working with the N.C. Coastal Land Trust on potential property conveyance and long-term stewardship (primarily intended for use by the proposed Moze Heritage Center and Nature Park). An August 12, 2020 letter was sent to the Town of Navassa documenting the Multistate Trust's intent to convey property to the Town for the Moze project.

COVID-19 (Coronavirus) Update, 4th Quarter 2020

The Multistate Trust

The Multistate Trust's goal is to continue work on activities that can be done safely during the pandemic. All Site-related activities are being conducted in accordance with state, local, and federal COVID-19 guidelines.

U.S Environmental Protection Agency (EPA)

EPA's highest priority is protecting the health and safety of the public, as well as maintaining the health and safety of EPA staff and remediation partners. The protection of health and safety requires close coordination with federal, state, and local health authorities. In July 2020, EPA issued two documents to supplement existing guidance to help analyze COVID-19 risk and determine necessary actions to minimize COVID-19 risk during field activities.

- [Interim EPA COVID-19 Health & Safety Guidelines for Field Activities](#) provides an integrated set of safety and health guidance that provides timely and consistent information for personnel conducting field activities.
- [Job Hazard Analysis for COVID-19](#) can be used to manage the level of COVID-19 risk.

North Carolina COVID-19 Response

- North Carolina Department of Health and Human Services (NCDHHS) COVID-19 Response in North Carolina <https://covid19.ncdhhs.gov>
- Governor Roy Cooper issued Executive Order 169, Restrictions to Protect Lives During the COVID-19 Pandemic: Phase 3: <https://www.nc.gov/covid-19/staying-ahead-curve>
- Governor Roy Cooper [issued](#) additional COVID-19 safety measures to tighten mask requirements and enforcement as cases continue to rise rapidly in North Carolina and across the country.
- <https://governor.nc.gov/news/cases-rising-rapidly-north-carolina-tightens-existing-mask-requirements-and-enforcement>
- [Executive Order 180](#) goes into effect on Wednesday, November 25 and runs through Friday, December 11. <https://files.nc.gov/governor/documents/files/EO180-Face-Coverings-Requirements.pdf>

Contact Information

NCDEQ
David Mattison
Superfund Section
Project Manager
(919) 707-8336
david.mattison@ncdenr.gov

EPA
Erik Spalvins
Remedial Project
Manager
(404) 562-8938
spalvins.erik@epa.gov

EPA
Tonya Spencer-Harvey
Community Involvement
Coordinator
(404) 562-8463
spencer.latonya@epa.gov

Multistate Trust
Richard Elliott
Project Manager
(617) 953-1154
re@g-etg.com